

**OLYMPUS**<sup>®</sup>

Your Vision, Our Future

**EVIS EUS**

PROBE DRIVING UNIT

**MAJ-1720**

Designed to Support a Wide Range of EUS and EBUS Procedures



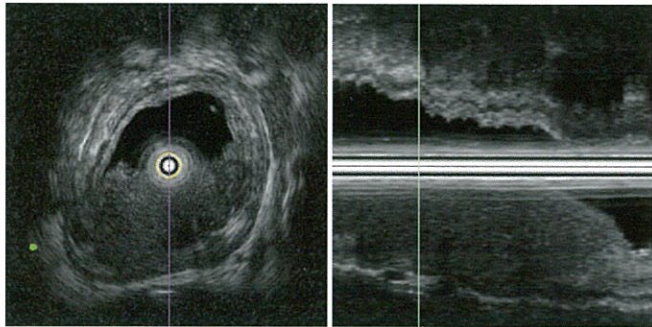
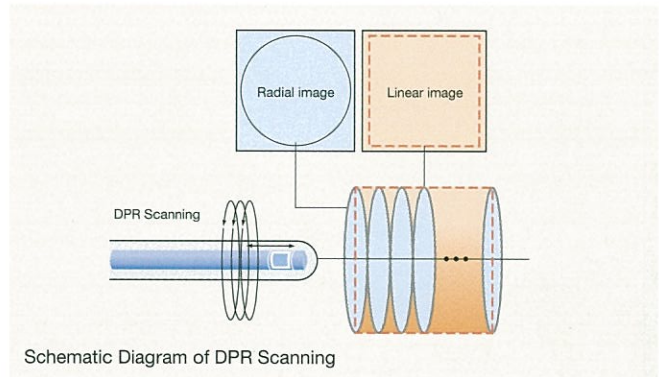
# MAJ-1720

## Take advantage of convenient ultrasound scanning with OLYMPUS' wide range of ultrasound miniature probes

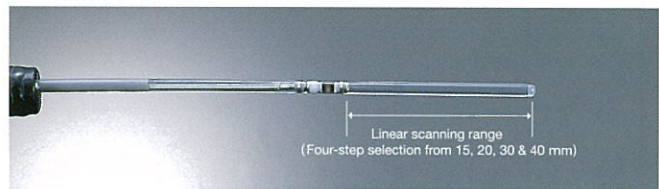
- Applicable to a wide spectrum of EUS and EBUS procedures, OLYMPUS' slim ultrasound probes have a wide frequency range of 7.5 to 30 MHz enabling observation at high frequencies to provide higher resolution of superficial layers, while also facilitating endosonography of difficult-to-access locations such as strictures. In addition, these probes can be used in intraductal ultrasonography, which is not possible with conventional EUS scopes.
- Balloon type miniature probes can be used in areas where water does not pool easily or safely, such as in the esophagus or the lungs.

## Dual-plane reconstruction (DPR) combines radial and linear images for more detailed imaging

- When you combine a UM-DP12-25R /UM-DP20-25R/UM-DG20-31R with the MAJ-1720, DPR technology allows dual radial and linear images to be displayed simultaneously after a single stroke of the helical scan.
- DPR makes ultrasound images easier to interpret, since it generates two dimensions that correlate directly with one another.
- When the EU-ME1 processor is used, DPR data can deliver 3D images in real time.



DPR display



UM-DP12/20-25R

## Specifications

### Main Unit Specifications

Size	Dimensions (Main Unit)	Total Length	Weight
	71 mm(W) x 94 mm(H) x 190 mm(D)	1850 mm	1.4 kg

### Probes

Ultrasound Probes	Model	Frequency	Scanning Method	Working Length	Total Length	Insertion Tube Outer Diameter (Distal) (Maximum)	
	UM-DP12-25R	12 MHz	Mechanical radial and helical scanning	2050 mm	2210 mm	2.5 mm	
UM-DP20-25R	20 MHz	3.1 mm					
UM-DG20-31R	20 MHz	3.1 mm					
UM-2R	12 MHz	Mechanical radial scanning	2050 mm	2140 mm	2.4 mm	2.2 mm	
UM-3R	20 MHz				2.0 mm		2.0 mm
UM-G20-29R					1.7 mm		2.0 mm
UM-S20-20R					1.4 mm		1.7 mm
UM-S20-17S					2.6 mm*		
UM-BS20-26R	30 MHz				1.7 mm		2.0 mm
UM-S30-20R		2.4 mm					
UM-S30-25R	30 MHz		2050 mm	2140 mm			

\*when used with the balloon sheath MAJ-643R

Rectal Ultrasound Probes	Model	Frequency	Scanning Method	Length of Insertion Section	Insertion Section Maximum Outer Diameter
	RU-75M-R1	7.5 MHz	Mechanical radial scanning	150 mm	12 mm (Maximum)
RU-12M-R1	12 MHz				

### Compatibility—Endoscopic Ultrasound Centers

EU-ME1, EU-M60, EU-M2000, EU-M30S \*These products may not be available in some countries.

Specifications, design and accessories are subject to change without any notice or obligation on the part of the manufacturer.



OLYMPUS MEDICAL SYSTEMS CORP.  
Shinjuku Monolith, 2-3-1 Nishi-Shinjuku, Shinjuku-ku, Tokyo 163-0914, Japan

For a complete listing of sales and distribution locations visit:  
[www.olympus.com](http://www.olympus.com)